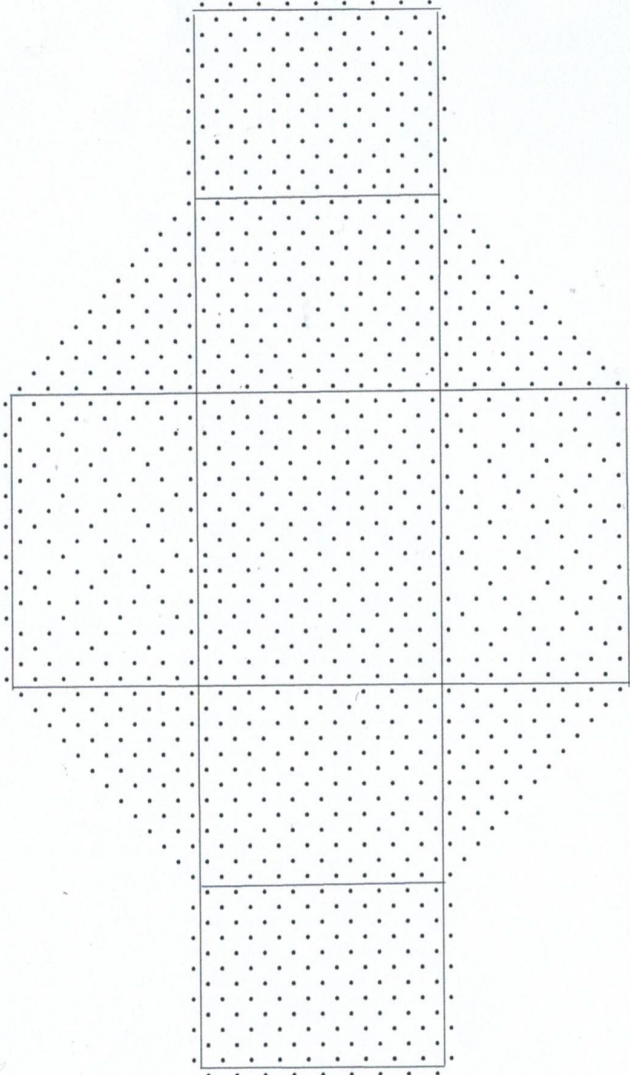


# GOLD

46 pairs Madeira Metallic No 40 blue (sparkly)

8 pairs Madeira Metallic No 40 gold (sparkly)

Purple line on drawing = 2 pairs of gold

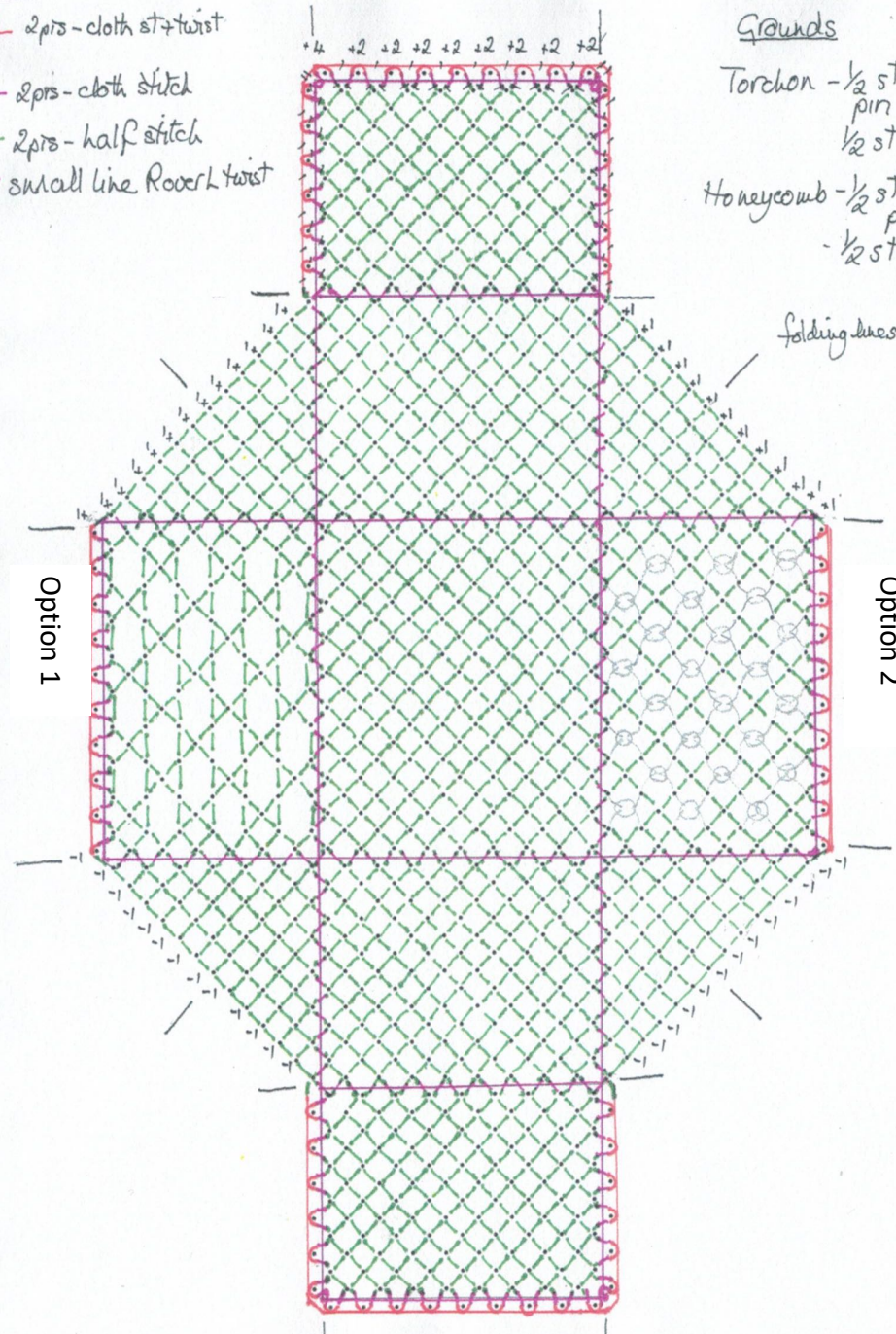


© KITTY MASON

## Code

- + 2prs - cloth st + twist
- + 2prs - cloth stitch
- + 2prs - half stitch
- + small line Roverk twist

Christmas card 2019



## Grounds

- Torchon -  $\frac{1}{2}$  st  
pm  
 $\frac{1}{2}$  st
- Honeycomb -  $\frac{1}{2}$  st + twist  
pm  
 $\frac{1}{2}$  st + twist

folding lines

Option 1

Option 2